

Careers at Westfield Health

We are Westfield Health

For over 100 years we have been dedicated to making a healthy difference to the quality of life of our customers and the communities in which they live and work.



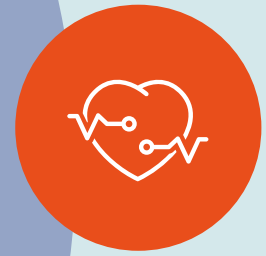
We do that by delivering evidence-based health and wellbeing solutions that support people, communities and workplaces to be healthier. We know that healthy people are happier and more productive, and our vision is to work with like-minded people and businesses to inspire healthy choices.

With opportunities to work in diverse and collaborative teams such as our Customer Hub, Finance, ICT, HR, Marketing, Sales and more. We're always looking for the best talent to join us, if you'd like to be kept up to date on relevant job alerts you can sign up here.



We believe it is important that we all have meaningful work that fulfils our own potential and adds value to Westfield Health. We are curious and creative and take opportunities to look at things differently to enhance the experience for our colleagues and customers.

Benefits at Westfield Health



The health and wellbeing of our people is an important part of our culture.

From on-site yoga and fitness classes to nutrition workshops, a wellbeing room, free fruit and monthly wellbeing campaigns, we strive to make a healthy difference to the lives of our employees.

Some of our other exciting benefits include:

- 25 Days Holiday plus bank holidays and an additional Westfield Holiday for Christmas Eve.
- Health Cash Plan and Private Health insurance
- Flexible working
- On site gym, free for all colleagues
- Year-round engagement activities and events
- Volunteering opportunities
- Westfield Rewards – Vouchers and discounts at 1000s of leading retailers
- And more!



We've trained over 30 of our colleagues in Mental Health First Aid (MHFA) and have a mental health policy in place because we recognise the importance of both the physical and mental health of our people.



Colleagues at Westfield Health

Our culture is built by our colleagues through their commitment to working in an environment where everyone is recognised and listened to.

To understand what some of our colleagues think about working at Westfield Health, have a read below



"What I like most, is the trust and freedom that Westfield give all staff to work flexibly. This allows me to have a good work/life balance and be more productive."

-Morgan

"I enjoy the wide variety of projects I have the opportunity to be involved in."

-Charley

"I like the flexibility we have, i like the people, i like the way my team all work together, we all pull together to work collaboratively."

-Jason

"The Leadership Team believe in and invest in us which produces a work environment that is a pleasure to be a part of. Everyone I've met has been welcoming, helpful and always there if I need them. I feel privileged and extremely blessed to work for a company that practice what they preach, they genuinely care about the wellbeing of their people. "

-Fiona

"The people are great, it's great how everyone collaborates. There is a real emphasis on giving colleagues a voice, from deciding on charitable donations to what our ways of working should be. The values can be felt in everything we do. It's a great place to work."

-Matt

Investors in People Westfield Health

Investors In People (IIP) is an external accreditation that Westfield Health use to understand how our colleagues are thinking and feeling.

More information about how Investors in People assess organisations can be found [here](#).



In 2022

- We received the Gold IIP award.
- All nine indicators improved on previous survey results (2019).
- People understand the priorities and goals of the organisation and feel engaged and motivated to deliver.
- High levels of confidence and trust in leadership and management.
- We currently rank first in the top 1000 companies assessed in the financial sector,

98.9%

agree that the organisation has clear values.

96.8%

of people feel that the organisation is a great place to work.

99.5%

feel that the organisation has a plan for the future.

"An engaged workforce who have high levels of confidence and trust in their leaders." – IIP 2022

